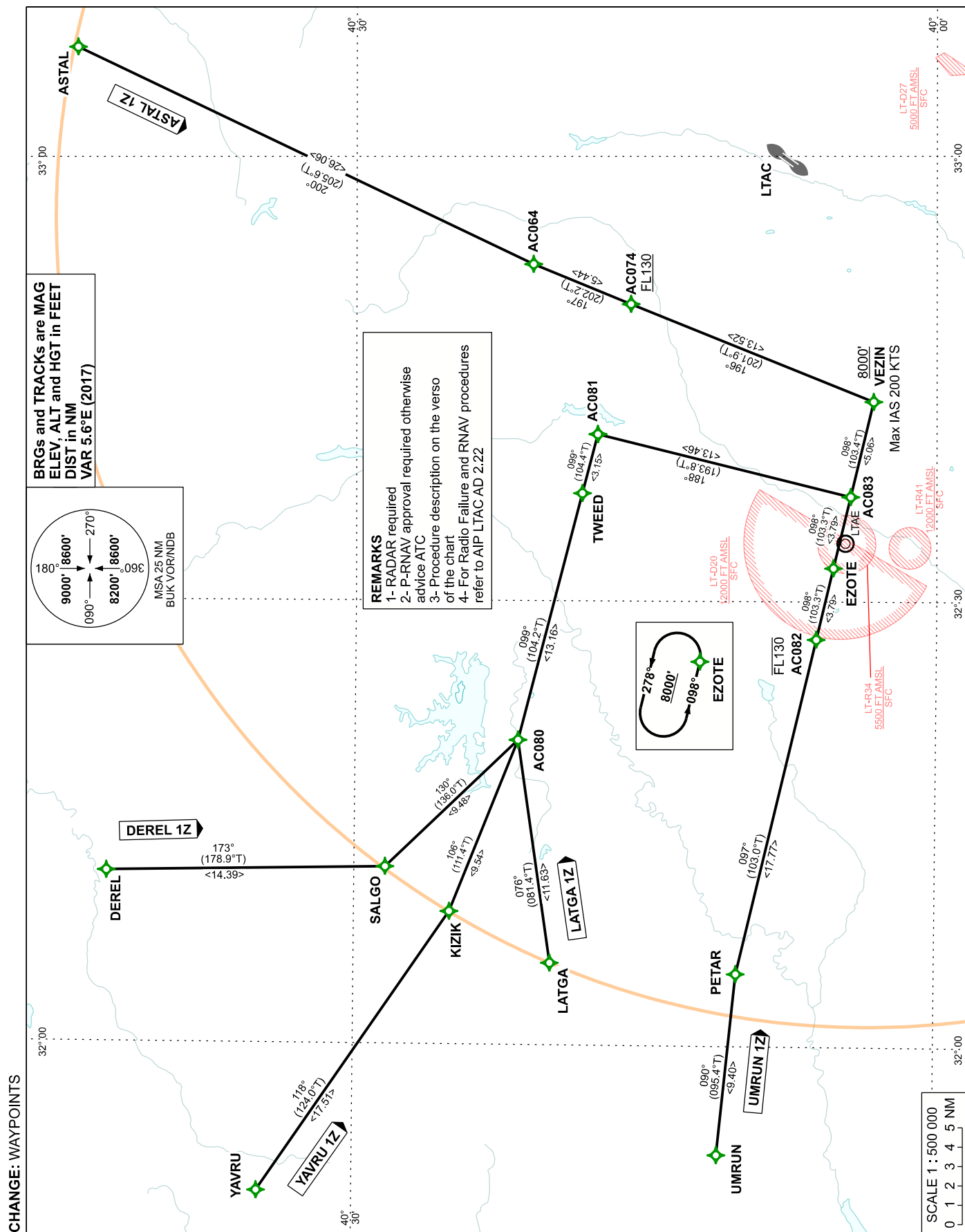


STANDARD ARRIVAL CHART
INSTRUMENT (STAR) - ICAOTRANSITION ALTITUDE
10 000 FTTWR : 118.1 - 257.8
APP : 119.6 - 119.1ANKARA/ESENBOĞA
RNAV (GNSS)
RWY 03L/R

ESENBAGA AIRPORT RNAV (GNSS) STAR RWY 03L/R

Designator	Abbreviated Description	Descent
ASTAL 1Z	ASTAL-AC064[L]-AC074[F130+;L]-VEZIN[K200-;A8000+]	As cleared
UMRUN 1Z	UMRUN-PETAR[R]-AC082[F130-]-EZOTE-AC083-VEZIN[K200-;A8000+]	As cleared
LATGA 1Z	LATGA-AC080[R]-TWEED-AC081[R]-AC083[L]-VEZIN[K200-;A8000+]	As cleared
YAVRU 1Z	YAVRU-KIZIK[L]-AC080[L]-TWEED- AC081[R]-AC083[L]- VEZIN[K200-;A8000+]	As cleared
DEREL 1Z	DEREL-SALGO[L]-AC080[L]-TWEED-AC081[R]-AC083[L]-VEZIN[K200-;A8000+]	As cleared

Type	Fix identifier (Waypoint name)	Latitude	Longitude
FlyBy	VEZIN	40:03:18.06N	032:43:28.24E
FlyBy	AC064	40:20:53.96N	032:52:43.67 E
FlyBy	AC083	40:04:28.44N	032:37:03.87 E
FlyBy	AC081	40:17:33.50N	032:41:15.06 E
FlyBy	AC080	40:21:36.31N	032:20:34.97 E
FlyBy	AC074	40:15:51.52N	032:50:02.42 E
FlyBy	AC082	40:06:13.30N	032:27:27.10 E
FlyBy	EZOTE	40:05:20.97N	032:32:15.54 E
FlyBy	TWEED	40:18:20.73N	032:37:15.53 E
FlyBy	SALGO	40:28:26.00N	032:11:58.00 E
FlyBy	LATGA	40:19:53.00N	032:05:32.00 E
FlyBy	ASTAL	40:44:26.00N	033:07:28.00 E
FlyBy	DEREL	40:42:50.00N	032:11:36.00 E
FlyBy	PETAR	40:10:16.00N	032:04:53.00 E
FlyBy	UMRUN	40:11:09.89N	031:52:40.52 E
FlyBy	KIZIK	40:25:06.00N	032:08:58.00 E
FlyBy	YAVRU	40:34:56.00N	031:49:58.00 E

Note1: At first contact with ESENBAGA APP report if unable to comply the RNAV procedure.

Note2: At first contact with ESENBAGA APP report only call sign.

Note3: IAS 200 Kts on base leg/closing heading to final approach up to 12 NM to touchdown. IAS 180 Kts on final approach course within 12 NM to 8 NM to touchdown. IAS 170 Kts on final approach course within 8 NM to 6 NM to touchdown. IAS 160 Kts on final approach course within 6 NM to 4 NM to touchdown

Note4: These speeds are applied for ATC separation purposes and are mandatory. All speed restrictions are to be flown as accurately as possible. Aircraft unable to conform to these speeds should inform ATC and state what speeds to be used